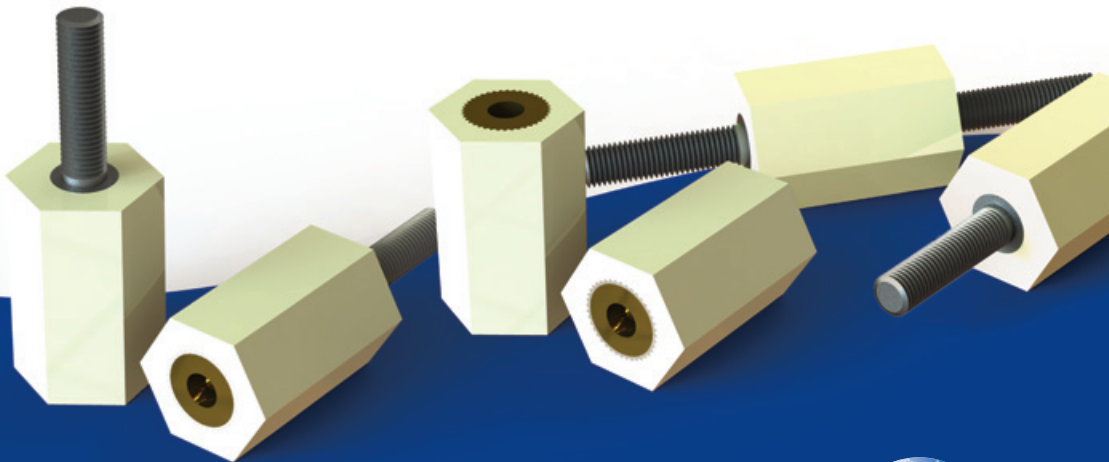


# A Pillar of STRENGTH

Termate Pillar Stand-off Insulators – a wide selection of heights and forms with a small footprint.

- Self extinguishing UL94-V0
- NF F Class 16-101/102 F2 /I3
- Female and male stud options
- High arc resistance



 +44 [0]115 978 4652

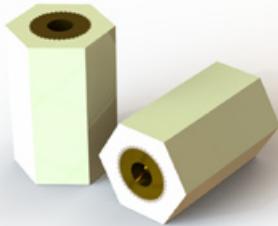
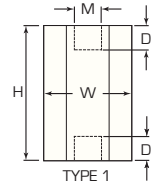
 [sales@termate.com](mailto:sales@termate.com)



TERMATE

# Female to Female

## Pillar Stand-off Insulators



### Type 1 Properties

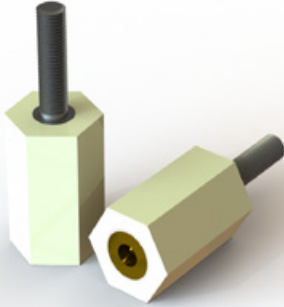
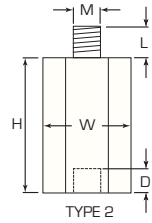
Material:	Zero Halogen & Phosphorous Free Polyamide 6 with Low Smoke Emissions and Flame Retardant
Operating Temp:	-20°C to +130°C
Oxygen Index:	32%
Flammability:	UL94-V0
NF F Class:	16-101/102 F2/I3
Female Insert:	Brass
Glow Wire:	960°C
Equipment Voltage $U_e$ :	1000 V AC 1000 V DC
Insulation Voltage $U_i$ :	1000 V AC 1000 V DC
Impulse Voltage $U_{mp}$ :	12kV

Reference				Tightening Torque	Type	Part Number
Height [H] mm	Width [W] mm	Thread [M]	Depth [D] mm			
20	12	M4	5	2	1	3M420F
20	12	M5	5	4	1	3M520F
25	12	M4	5	2	1	3M425F
25	12	M5	5	4	1	3M525F
30	12	M4	5	2	1	3M430F
30	12	M5	5	4	1	3M530F
40	12	M5	5	4	1	3M540F
50	12	M5	5	4	1	3M550F
60	12	M5	5	4	1	3M560F

Fixing details: Hole diameter = stand-off thread size [M]+1 mm. e.g. M4 Thread = 5 mm hole diameter

# Female to Male

## Pillar Stand-off Insulators



### Type 2 Properties

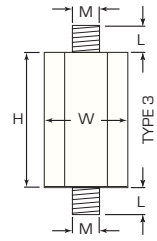
Material:	Zero Halogen & Phosphorous Free Polyamide 6 with Low Smoke Emissions and Flame Retardant
Operating Temp:	-20°C to +130°C
Oxygen Index:	32%
Flammability:	UL94-V0
NF F Class:	16-101/102 F2/I3
Female Insert:	Brass
Male Insert:	Mild Steel Zinc & Passivated
Glow Wire:	960°C
Equipment Voltage $U_e$ :	1000 V AC / DC
Insulation Voltage $U_i$ :	1000 V AC / DC
Impulse Voltage $U_{imp}$ :	12kV

Reference					Tightening Torque		Type	Part Number
					Female	Male		
Height [H] mm	Width [W] mm	Thread [M]*	Depth [D] mm	Length [L] mm	Max (Nm)	Max (Nm)		
15	12	M4	5	16	2	2	2	3M415H
15	12	M5	5	14	4	4	2	3M515H
20	12	M4	5	16	2	2	2	3M420H
20	12	M5	5	14	4	4	2	3M520H
25	12	M4	5	16	2	2	2	3M425H
25	12	M5	5	14	4	4	2	3M525H
30	12	M4	5	16	2	2	2	3M430H
30	12	M5	5	14	4	4	2	3M530H
40	12	M5	5	14	4	4	2	3M540H
50	12	M5	5	14	4	4	2	3M550H
60	12	M5	5	14	4	4	2	3M560H

Fixing details: Hole diameter = stand-off thread size [M]+1 mm. e.g. M4 Thread = 5 mm hole diameter

# Male to Male

## Pillar Stand-off Insulators



### Type 3 Properties

Material:	Zero Halogen & Phosphorous Free Polyamide 6 with Low Smoke Emissions and Flame Retardant
Operating Temp:	-20°C to +130°C
Oxygen Index:	32%
Flammability:	UL94-V0
NF F Class:	16-101/102 F2/I3
Male Insert:	Mild Steel Zinc & Passivated
Glow Wire:	960°C
Equipment Voltage $U_e$ :	1000 V AC 1000 V DC
Insulation Voltage $U_i$ :	1000 V AC 1000 V DC
Impulse Voltage $U_{imp}$ :	12kV



Reference				Tightening Torque	Type	Part Number
Height [H] mm	Width [W] mm	Thread [M]	Length [L] mm	Max [Nm]		
15	12	M4	16	2	3	3M415M
15	12	M5	14	4	3	3M515M
20	12	M4	16	2	3	3M420M
20	12	M5	14	4	3	3M520M
25	12	M4	16	2	3	3M425M
25	12	M5	14	4	3	3M525M
30	12	M4	16	2	3	3M430M
30	12	M5	14	4	3	3M530M
40	12	M5	14	4	3	3M540M
50	12	M5	14	4	3	3M550M
60	12	M5	14	4	3	3M560M

Fixing details: Hole diameter = stand-off thread size [M]+1 mm. e.g. M4 Thread = 5 mm hole diameter



TERMATE

Termate Limited  
John Street  
New Basford  
Nottingham  
NG7 7HL

[www.termate.com](http://www.termate.com)

 +44 (0)115 978 4652

 [sales@termate.com](mailto:sales@termate.com)