



TERMATE

Termate have manufactured high performance components since 1956, supplying a global customer base from our U.K. headquarters with the support of our international distribution network.

For over 40 years we have independently tested our products to ensure that they meet and exceed the demands of international standards including IEC 61439. We work with leading test houses and certification bodies including kATF, ASTA and Dekra.

Our new products offer superb performance and longevity, incorporating materials manufactured to our specification. We listen to our customers requirements and respond, which has led to the introduction of versatile products. These can be used in more applications reducing the total costs to our partners.

We are well known by our customers for the detailed application engineering and the first class customer service we offer.

This leaflet displays our range of Pillar Stand-offs, which are part of our Traction Products Range which includes Stud Type Terminals, Low Smoke Insulators and Flexible connections. Full details can be found at [termate.com/traction-products/](http://termate.com/traction-products/). These products are all manufactured with the latest equipment.

We hope that our Pillar Stand-offs are of interest. If you would like to receive a quote, application help or learn more about any of our products or services, we would be delighted to hear from you.

You can find out more information by visiting our website at [www.termate.com](http://www.termate.com), alternatively you can email our sales team at [sales@termate.com](mailto:sales@termate.com) or call **+44 (0)115 978 4652**.



## TERMATE

Termate Limited  
John Street  
New Basford  
Nottingham  
NG7 7HL

fax: +44 (0)115 970 2106

[www.termate.com](http://www.termate.com)



+44 (0)115 978 4652



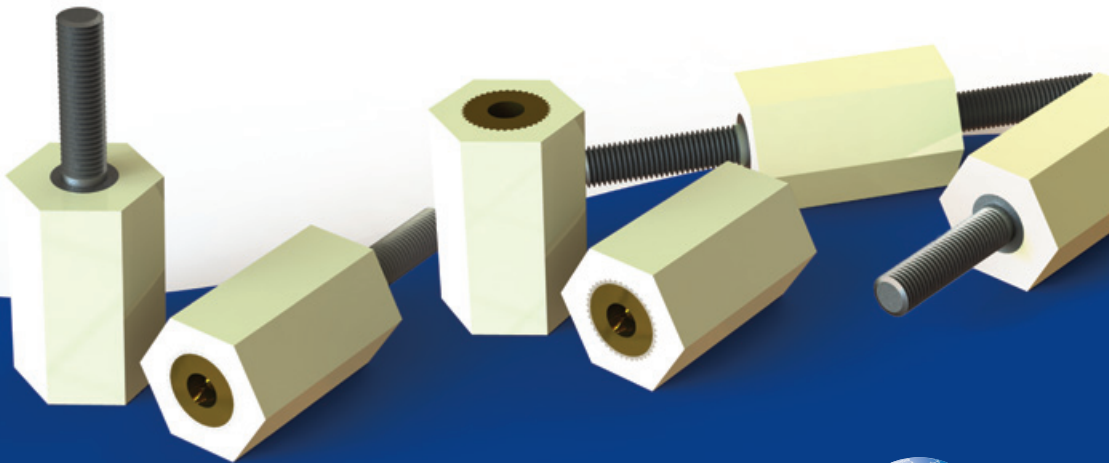
[sales@termate.com](mailto:sales@termate.com)

Termate reserves the right to alter, without notice, the specification, design, or condition of supply of all its products and services. Dimensions in this catalogue are provided for reference only.

# A Pillar of STRENGTH

Termate Pillar Stand-off Insulators – a wide selection of heights and forms with a small footprint.

- Self extinguishing UL94-V0
- NF F Class 16-101/102 F2 /I3
- Female and male stud options
- High arc resistance



 +44 [0]115 978 4652

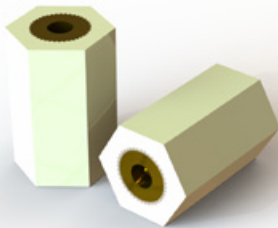
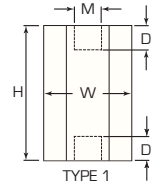
 [sales@termate.com](mailto:sales@termate.com)



TERMATE

# Female to Female

## Pillar Stand-off Insulators



### Type 1 Properties

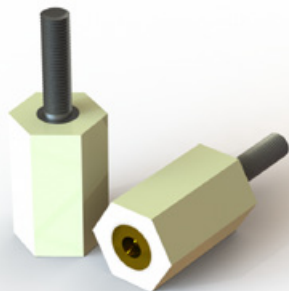
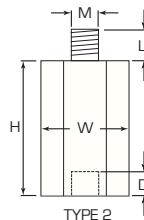
Material:	Zero Halogen & Phosphorous Free Polyamide 6 with Low Smoke Emissions and Flame Retardant
Conductor Temp:	140°C Continuous
Oxygen Index:	32%
Flammability:	UL94-V0
NF F Class:	16-101/102 F2/I3
Female Insert:	Brass
Glow Wire:	960°C
Equipment Voltage $U_e$ :	1000V
Insulation Voltage $U_i$ :	1000V
Impulse Voltage $U_{imp}$ :	12kV

Reference				Tightening Torque	Type	Part Number
Height [H] mm	Width [W] mm	Thread [M]	Depth [D] mm			
20	12	M4	5	2	1	3M420F
20	12	M5	5	4	1	3M520F
25	12	M4	5	2	1	3M425F
25	12	M5	5	4	1	3M525F
30	12	M4	5	2	1	3M430F
30	12	M5	5	4	1	3M530F
40	12	M5	5	4	1	3M540F
50	12	M5	5	4	1	3M550F
60	12	M5	5	4	1	3M560F

Fixing details: Hole diameter = stand-off thread size [M]+1 mm. e.g. M4 Thread = 5 mm hole diameter

# Female to Male

## Pillar Stand-off Insulators



### Type 2 Properties

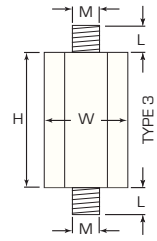
Material:	Zero Halogen & Phosphorous Free Polyamide 6 with Low Smoke Emissions and Flame Retardant
Conductor Temp:	140°C Continuous
Oxygen Index:	32%
Flammability:	UL94-V0
NF F Class:	16-101/102 F2/I3
Female Insert:	Brass
Male Insert:	Mild Steel Zinc & Passivated
Glow Wire:	960°C
Equipment Voltage $U_e$ :	1000V
Insulation Voltage $U_i$ :	1000V
Impulse Voltage $U_{imp}$ :	12kV

Reference					Tightening Torque		Type	Part Number
					Female	Male		
Height [H] mm	Width [W] mm	Thread [M]*	Depth [D] mm	Length [L] mm	Max (Nm)	Max (Nm)		
15	12	M4	5	16	2	2	2	3M415H
15	12	M5	5	14	4	4	2	3M515H
20	12	M4	5	16	2	2	2	3M420H
20	12	M5	5	14	4	4	2	3M520H
25	12	M4	5	16	2	2	2	3M425H
25	12	M5	5	14	4	4	2	3M525H
30	12	M4	5	16	2	2	2	3M430H
30	12	M5	5	14	4	4	2	3M530H
40	12	M5	5	14	4	4	2	3M540H
50	12	M5	5	14	4	4	2	3M550H
60	12	M5	5	14	4	4	2	3M560H

Fixing details: Hole diameter = stand-off thread size [M]+1 mm. e.g. M4 Thread = 5 mm hole diameter

# Male to Male

## Pillar Stand-off Insulators



### Type 3 Properties

Material:	Zero Halogen & Phosphorous Free Polyamide 6 with Low Smoke Emissions and Flame Retardant
Conductor Temp:	140°C Continuous
Oxygen Index:	32%
Flammability:	UL94-V0
NF F Class:	16-101/102 F2/I3
Male Insert:	Mild Steel Zinc & Passivated
Glow Wire:	960°C
Equipment Voltage $U_e$ :	1000V
Insulation Voltage $U_i$ :	1000V
Impulse Voltage $U_{imp}$ :	12kV



Reference				Tightening Torque	Type	Part Number
Height [H] mm	Width [W] mm	Thread [M]	Length [L] mm	Max [Nm]		
15	12	M4	16	2	3	3M415M
15	12	M5	14	4	3	3M515M
20	12	M4	16	2	3	3M420M
20	12	M5	14	4	3	3M520M
25	12	M4	16	2	3	3M425M
25	12	M5	14	4	3	3M525M
30	12	M4	16	2	3	3M430M
30	12	M5	14	4	3	3M530M
40	12	M5	14	4	3	3M540M
50	12	M5	14	4	3	3M550M
60	12	M5	14	4	3	3M560M

Fixing details: Hole diameter = stand-off thread size [M]+1 mm. e.g. M4 Thread = 5 mm hole diameter