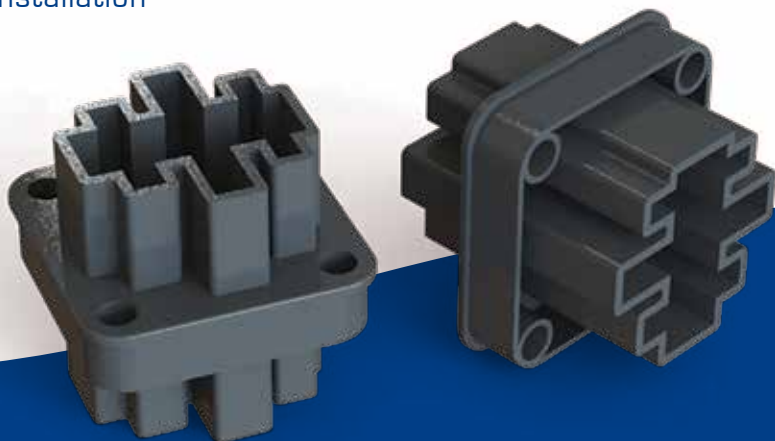


Connections Made Simple

Termate's versatile Bushings and Boots make your connections quick and simple!

- IEC 61439 compliant
- Self extinguishing: UL94-V0
- Versatile – 2 designs accept up to 8 different conductor sizes
- Insulated boots available for improved IP protection
- Easy installation



 +44 [0]1 15 978 4652

 sales@termate.com



TERMATE



TERMATE

Termate have manufactured high performance components since 1956, supplying a global customer base from our U.K. headquarters with the support of our international distribution network.

For over 40 years we have independently tested our products to ensure that they meet and exceed the demands of international standards including IEC 61439. We work with leading test houses and certification bodies including kATF, ASTA and Dekra

Our new products offer superb performance and longevity, incorporating materials manufactured to our specification. We listen to our customers requirements and respond, which has led to the introduction of versatile products. These can be used in more applications reducing the total costs to our partners.

We are well known by our customers for the detailed application engineering and the first class customer service we offer.

This leaflet displays our range of Through Wall Bushings and Boots, part of our LV Power Products Range which comprises Busbar supports, Stand-offs, Components for Withdrawable Systems, and Busplugs.

We hope that our Through Wall Bushings and Boots are of interest. If you would like to receive a quote, application help or learn more about any of our products or services, we would be delighted to hear from you.

You can find out more information by visiting our website at www.termate.com, alternatively you can email our sales team at sales@termate.com or call **+44 (0)115 978 4652**.

Through Wall Bushings & Boots

B4-30 and B4-50



Bushings Properties

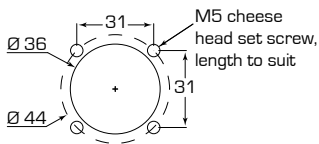
Bushings Material:	Glass Reinforced Polyamide 6.6
Conductor Temp:	140°C [†]
Flamability:	UL94-V0
Equipment Voltage U _e :	690V
Insulation Voltage U _i :	690V
Impulse Voltage U _{imp} :	8kV
Glow Wire:	960°C

[†] In line with the limits set out in IEC61439, insulating components in contact with conductors may be required to continuously operate at an average of 140°C [Max 145°C]. This range of products meets the requirement, the material for them being assigned thermal class F established using methods similar to IEC60085.

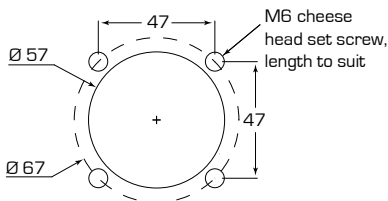
Termate reserves the right to alter, without notice, the specification, design, or condition of supply of all its products and services. Dimensions in this catalogue are provided for reference only.

Warranty as stated in Encompass Terms and Conditions of Trading is void if any modification is made to the warranted product.

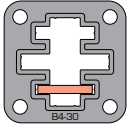
B4-30 Bushings - Punching Details



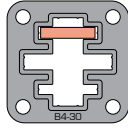
B4-50 Bushings - Punching Details



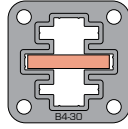
B4-30 Bushings - Versatility



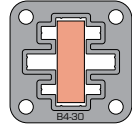
20 x 3



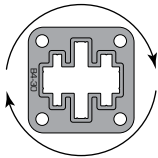
20 x 4



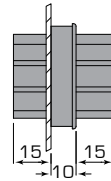
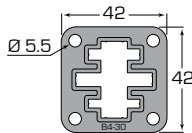
30 x 5



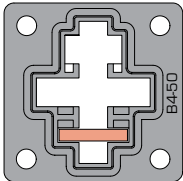
30 x 10



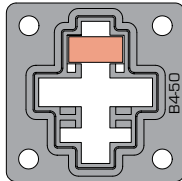
Rotate as required to suit application



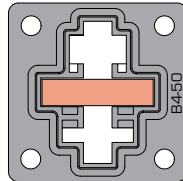
B4-50 Bushings - Versatility



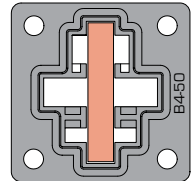
25 x 5



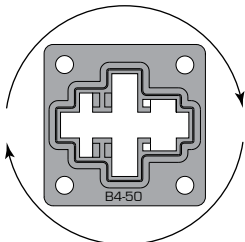
20 x 10



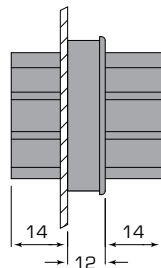
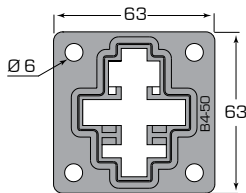
40 x 10



50 x 10



Rotate as required to suit application



Boot Properties

Boot Material: Black PVC

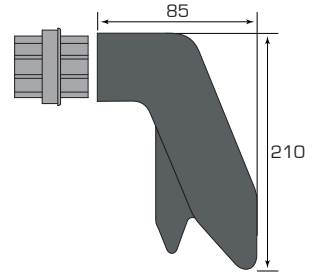
Flamability: UL94-V0

Operating Temp: Max 90°C continuous

Glow Wire: 650°C

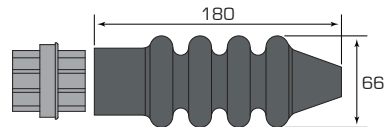
B4-30 Boot – Angled Boot for B4-30

Cable size up to
1 x 300 mm²
or 2 x 240 mm²



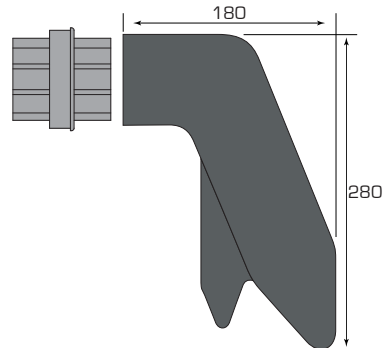
B4-30S Boot – Straight Boot for B4-30

Cable size up to
1 x 300 mm²



B4-50 Boot – Angled Boot for B4-50

Cable size up to
1 x 500 mm²
or 2 x 300 mm²





TERMATE

Termate Limited
John Street
New Basford
Nottingham
NG7 7HL
www.termate.com

 +44 (0)115 978 4652

 sales@termate.com